


PRODUCT OVERVIEW

OpenText Lens


Gain end-to-end visibility into data flows between enterprise apps and trading partner systems



 **Increase** end-to-end data visibility

 **Improve** business agility

 **Unify** data visibility

 **Empower** more users with insights

Data visibility enables accurate and timely insights on business processes that are critical for improving operational efficiency, delivering improved customer service and finding new sources of customer value.

But many enterprise systems remain siloed, preventing unified visibility into business operations. This is because most integration platforms used to connect disparate systems move data behind the scenes, limiting access to the wealth of information that data integration can reveal.

OpenText™ Lens™ is a cloud-based data visibility solution that helps monitor data flows between any system or data source, within the enterprise and with business partners. The solution offers visibility into all integration data flow with a single solution to empower proactive incident management by alert and event notification for increased business continuity.

Increase end-to-end data visibility

Gain visibility into complex data flows across all systems for complete insight into business processes. Detailed views and collaboration features help optimize business processes and reduce problem resolution time and cost.

Improve business agility

Improve responsiveness to business events or non-events. Manage unforeseen issues and mitigate risk before they impact the business.

| Filtering | Search | Trends | 3442 transactions found | | | | Actions | Layouts | Filters | Level |
|----------------------|---------------------|-------------------|-------------------------|-----------------------|-----------------------------|--------------|---------|---------|---------|-------|
| Narrow by | Transaction status | Sender name | Receiver name | Lesson transaction id | Transaction type | | | | | |
| Date range | 07/05/2019 09:48:54 | Groot Supply | Block HQ | 600000100 | 6068500724 | 350 | 350 | 350 | 350 | |
| Sender name | 07/05/2019 09:48:54 | Delivered | Block HQ | 600000100 | 6068500724 | 350 | 350 | 350 | 350 | |
| Block HQ | Region | EW-DEMO | Processing time | 982 ms | Category | Invoice | | | | |
| Block New York | Inbound | | Outbound | | Additional information | | | | | |
| Groot Supply | Interface | SOAP | Interface | HTTPS | Order number | 132021 | | | | |
| King's Supply | Format | Doc XML, INVOIC02 | Format | Doc XML, INVOIC01 | Cost center | 132021 | | | | |
| King's Supply | File size | 16.19 KB | File size | 8.25 KB | Port | Reinholdberg | | | | |
| Select more | | | | | | | | | | |
| Receiver name | 07/05/2019 09:48:54 | Groot Supply | Block New York | 1164211998 | 1609890003a | 350 | 350 | 350 | 350 | |
| Status | 07/01/2019 12:49:54 | Delivered | Block New York | 1164211998 | 14681000909 | 132022550 | 856 | 856 | 856 | |
| Delivered | 07/04/2019 12:48:54 | Delivered | Block HQ | 600000100 | 8019003950c | 132021350 | 856 | 856 | 856 | |
| Failed | 07/04/2019 08:52:03 | Delivered | Block HQ | 600000100 | 4c3518d8a1c | | | | | |
| Ready for pickup | 07/04/2019 09:52:03 | Delivered | Block HQ | 600000100 | 0450c47b7780c095c415876... | | | | | |
| Delivery in progress | 07/04/2019 09:52:00 | Delivered | Block New York | 1164211998 | 9854ec00f05 | | | | | |
| FA status | | | | | 40548b2b7b335eff64a00f1e... | 997 | | | | |

Unify data visibility

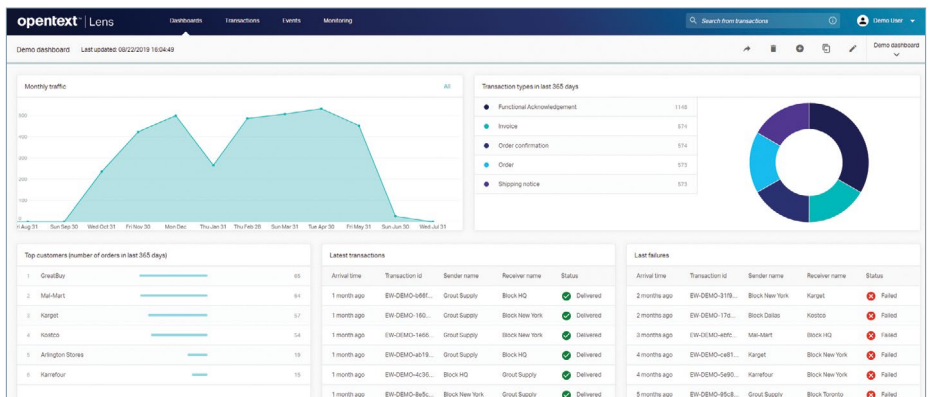
Improve control and transparency into data with increased visibility and efficiency for reporting and early problem identification.

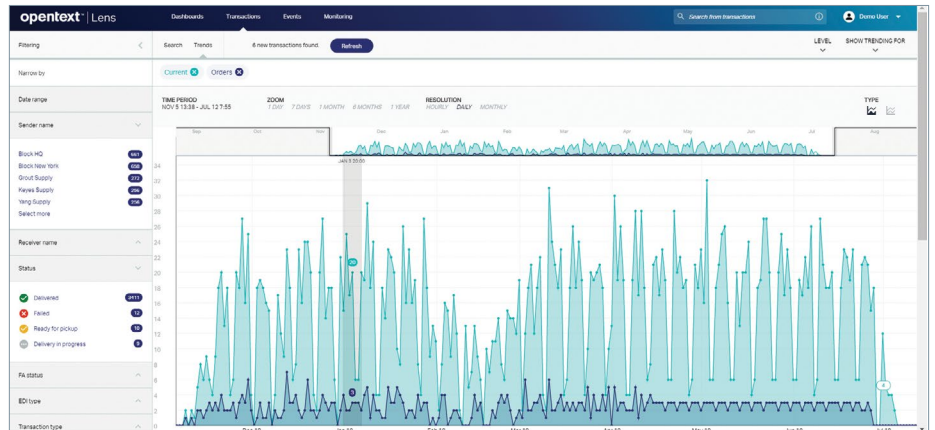
| TRANSACTION ID | SENDER TRANSACTION ID | RELATION TYPE | ARRIVAL TIME (UTC-04:00) |
|--------------------|-----------------------|---------------|--------------------------|
| EW-DEMO-3881540480 | 132021 | Order | 06/26/2019 12:49:54 |
| EW-DEMO-6068500724 | 350 | Invoice | 07/05/2019 09:48:54 |

Timeline view showing transaction flow from June 26 to July 6, 2019.

Empower more users with insights

Enable both technical and non-technical users to access and gain insights on the most meaningful data for their role with an intuitive user interface that requires little to no training.





Extract information advantage

Extract information about data in motion and utilize relevant business context to improve efficiency and data driven decision-making.

OpenText Professional Services—Enabling customers' success in their digital journey

- OpenText™ Managed Services
- OpenText Consulting Services
- OpenText Learning Services
- Private Cloud
- Optimize Assist Program

OpenText Lens features

| | |
|--|--|
| Personalized dashboards and filters | Creates customized dashboards and search filters to quickly and easily access the information most relevant for specific roles |
| Powerful search capabilities | Offers multiple search options to quickly find specific transactions or data types |
| Transaction lifecycle management | Provides detailed insights on the movement of data as it supports various stages of business processes |
| Notifications and alerting | Alerts users of activity, non-activity and process exceptions based on configurable business rules |
| Trending and timeline comparison | Allows users to explore data and identify trends and patterns in all integrations over time |
| Data collaboration | Improves data collaboration with employees and trading partners through easy to share saved reports and search filters |
| Payload encryption and viewing | Encrypts sensitive payload data and makes non-sensitive payloads available to help monitor and analyze business processes |

Video

Related solutions

[Hybrid Integration Platform »](#)

[Business Network Cloud Enterprise »](#)

Learn more

Lens is a powerful, user-friendly cloud solution that provides visibility into data flows between enterprise applications, customers, suppliers and partners. Whether monitoring business process health against KPIs or managing timely responses to electronic orders received from customers, Lens enables end-to-end visibility into data-driven business processes.

With the Lens UI, users can:

- Access the health-check dashboard
- Get alerts on critical situations
- Drill down to details of integration activities
- Explore past integration activities

About OpenText

OpenText, The Information Company, enables organizations to gain insight through market leading information management solutions, on-premises or in the cloud. For more information about OpenText (NASDAQ: OTEX, TSX: OTEX) visit: [opentext.com](https://www.opentext.com).

Connect with us:

- [OpenText CEO Mark Barrenechea's blog](#)
- [Twitter](#) | [LinkedIn](#)